

# I/O MTUs - SDe Series I/O

## ABB Ability™ Symphony® Plus Hardware Selector

Module Termination Units (MTUs) provide mounting and connectivity for SDe series control and I/O modules. The Evolution Mounting Chassis is a form, space-fit, functional replacement for a Harmony rack MMU. Mounting bases provide the host for SDe control and I/O modules when mounted in an evolution chassis or on a rail.

The MTUs combine with the SDe Series I/O product family including DIN Rail horizontally or vertically mounting. The flexible and modular I/O offering works across the entire control landscape regardless of application type, size, or physical location. It includes traditional analog, HART, and digital modules as also turbine specific modules for integrated turbine control solutions.

Below is an outline of the range of different MTUs for SDe I/O modules available.



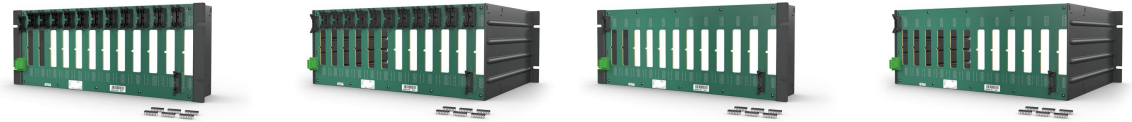
Specific feature <sup>1</sup>	EMB01S-BLK	EMB01S-CIO	EMB01S-EMR	EMB01S-PIO
<b>General info</b>				
Article number	7PAA015403R11	7PAA005092R11	7PAA008522R11	7PAA008524R11
Life cycle status	Active			
Line redundancy	Yes			
Hot swap	No			
Supported IO modules	NONE	AD11e	DO05e	PI01e
Singular or redundant	Singular			
Form factor	EMC-_B0_ Evolution Mounting Chassis			
Mounting	EMC-DB01, EMC-DB02, EMC-SB01, EMC-SB02			
HN800 bus length	190 mm		19 mm	190 mm
MTBF (per MIL-HDBK-217-FN2)	PR A: 45,248,869 Hours @ 30, 40 & 70 deg C	PR C: 1,384,953 Hours @ 30 ° C, 1,350,557Hours @ 40 ° C, 1,231,591 Hours @ 70 ° C	PR C: 1,404,403 Hours @ 30 ° C, 1,369,046 Hours @ 40 ° C, 1,246,948 Hours @ 70 ° C	
MTTR (Hours)	16 Hours	8 Hrs		
Channels		13	8	
<b>Dimensions</b>				
Width	35.5 mm	35.5 mm		
Depth	173.46 mm			
Height	177 mm			
Weight	126 grams	204 grams		
<b>Environment and certification</b>				
RoHS compliance	RoHS Directive 2015/863			
WEEE compliance	DIRECTIVE/2012/19/EU			

<sup>1</sup> For detailed information on each module, please visit: [symphonyplushardwareselector.automation.abb.com](https://symphonyplushardwareselector.automation.abb.com)



Specific feature <sup>1</sup>	EMB01S-SOE	EMB01S-UA1	EMB01S-XIO	EMB910e
<b>General info</b>				
Article number	7PAA008647R11	7PAA005094R11	7PAA005096R11	7PAA005098R11
Life cycle status	Active			
Line redundancy	Yes			
Hot swap	No			
Supported IO modules	DI06e	AI16e	AI12e, AO02e, DI06e, DO01e	SPC810e
Singular or redundant	Singular			Redundant
Form factor	EMC-_B0_ Evolution Mounting Chassis			
Mounting	EMC-DB01, EMC-DB02, EMC-SB01, EMC-SB02			
HN800 bus length	190 mm			
MTBF (per MIL-HDBK-217-FN2)	PR B: 1,404,403 Hours @ 30 °C, 1,369,046 Hours @ 40 °C, 1,246,948 Hours @ 70 °C	PR C: 73,572 Hours @ 30 °C, 73,473 Hours @ 40 °C, 73,089 Hours @ 70 °C	PR E: 245,577 Hours @ 30 °C, 244,473 Hours @ 40 °C, 240,272 Hours @ 70 °C	PR C: 8,568,246 Hours @ 30 °C, 7,392,563 Hours @ 40 °C, 4,825,271 Hours @ 70 °C
MTTR (Hours)	8 Hrs	8Hrs	8 Hrs	
Channels	16		14, 15 or 16	
<b>Dimensions</b>				
Width	35.5 mm			
Depth	173.46 mm			
Height	177 mm			
Weight	204 grams	218 grams	210 grams	181 grams
<b>Environment and certification</b>				
RoHS compliance	RoHS Directive 2015/863			
WEEE compliance	DIRECTIVE/2012/19/EU			

<sup>1</sup> For detailed information on each module, please visit: [symphonyplushardwareselector.automation.abb.com](https://symphonyplushardwareselector.automation.abb.com)



Specific feature <sup>1</sup>	EMC-DB01	EMC-DB02	EMC-SB01	EMC-SB02
<b>General info</b>				
Article number	7PAA005101R11	7PAA005102R11	7PAA005099R11	7PAA005100R11
Life cycle status	Active			
Line redundancy	Yes			
Hot swap	No			
Supported IO modules	EMB01S-CIO, EMB01S-EMR, EMB01S-PIO, EMB01S-SOE, EMB01S-UAI, EMB01S-XIO			
Singular or redundant	Singular			
Form factor	19-Inch Rack			
Mounting	REAR Mounting Rail	FRONT Mounting Rail	REAR Mounting Rail	Front Mounting Rack
HN800 bus length	610 mm		520 mm	
MTBF (per MIL-HDBK-217-FN2)	PR C: 569,872 Hours @ 30 °C, 483,065 Hours @ 40 °C, 310,534 Hours @ 70 °C		PR C: 685,379 Hours @ 30 °C, 598,469 Hours @ 40 °C, 409,247 Hours @ 70 °C	
MTTR (Hours)	16 Hrs			
<b>Dimensions</b>				
Width	483.1 mm (19.0 inches)	483.1 mm (19.0 inches)	483.1 mm (19.0 inches)	
Depth	99.04 mm (3.90 inches)			
Height	177.80 mm (7.0 inches)			
Weight	1.792 kg	3.175 kg	1.701 kg	3.084 kg
<b>Environment and certification</b>				
RoHS compliance	RoHS Directive 2015/863			
WEEE compliance	DIRECTIVE/2012/19/EU			

<sup>1</sup> For detailed information on each module, please visit: [symphonyplushardwareselector.automation.abb.com](https://symphonyplushardwareselector.automation.abb.com)

---

[solutions.abb.com/symphonyplus](https://solutions.abb.com/symphonyplus)  
[solutions.abb.com/controlsystems](https://solutions.abb.com/controlsystems)

---

800xA and Symphony Plus is a registered trademark of ABB. All rights to other trademarks reside with their respective owners.

We reserve the right to make technical changes to the products or modify the contents of this document without prior notice. With regard to purchase orders, the agreed particulars shall prevail. ABB does not assume any responsibility for any errors or incomplete information in this document.

We reserve all rights to this document and the items and images it contains. The reproduction, disclosure to third parties or the use of the content of this document – including parts thereof – are prohibited without ABB's prior written permission.

Copyright© 2025 ABB All rights reserved