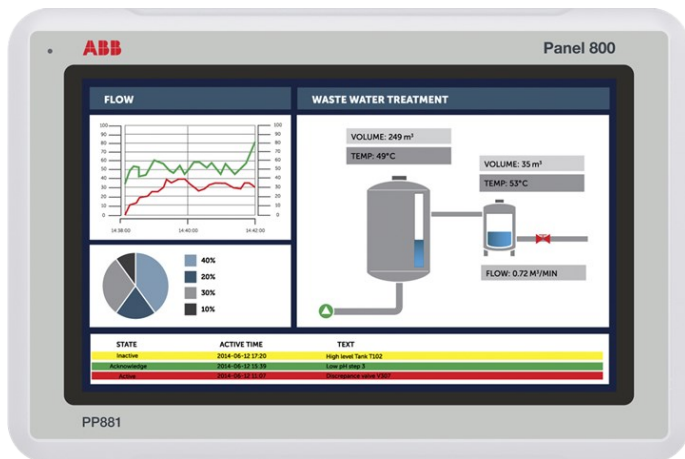


# PP881

## ABB Ability™ Symphony® Plus Hardware Selector



Touchscreen panels with brilliant TFT/LED display colors and multi-protocol connectivity. The standard range of Panel 800 comprises of PP875, PP881, PP883, PP886 and PP895 which are easy-to-use HMI with comprehensive and integrated templates and libraries for every conceivable process you need. All standard panels are equipped with high-resolution graphics in TFT/LED display. Most models offer wide screens and high-resolution displays for increased efficiency and excellent operator interaction.

### Features and benefits

- Easy to use**  
 A fully deployable HMI with comprehensive and integrated templates and libraries for every conceivable process. The Panel Builder tool, with a familiar Microsoft® Windows® environment along with multiple language support results in quick, easy and efficient engineering.
- State-of-the-art graphics**  
 Vector-based, high-resolution graphics in TFL/LED display, with the icon-based interface, navigation, and control.
- Robust and reliable**  
 Panel 800 is constructed in a strong yet lightweight diecast, powder-coated aluminum housing. Front casing withstands wet, dusty and demanding environments. Operating temperatures range between -10° C to + 60° C with maximum 85% humidity.
- Truly open platform**  
 Built on open architecture and technologies that accompany the .NET framework, these panels are capable of multi-brand controller connectivity. A multitude of connection options are available for local communication, expansion, remote access and more.
- Try your application before you use it**  
 Nice possibility to simulate and run the application directly from the Panel Builder 800 before you use it.

## General info

Article number	3BSE092978R1
Category	Standard
Display type	Touch
Display size	10.1"
Brightness	500 cd/m <sup>2</sup>
Display resolution, ratio	1024x600 pixels
Processor	ARM9 (1 GHz)
Main memory	1 GB
External storage media	2 GB SSD, 1.5 GB free for application storage
Dimension WxHxD (mm)	292 x 194 x 52 mm
Power supply	+ 24 V DC (18 to 32 VDC)
Operating temperature	-10 °C to +60 °C

## Detailed data

Dimming	Yes
Interaction type	Resistive touch
Realtime clock	Yes
Ethernet (shielded RJ 45)	2 x 1x10/100 Base-T
USB	2 x USB 2.0 500 mA
Serial port	1 x RS232, 1 x RS422/485, 1 x RS485 (only if COM 2 is RS485)

## Environment and certification

Frame material, front foil	White powder-coated aluminum
Power consumption	21.6 W
Protection (front/rear)	Front IP65, NEMA 4X/12 and UL Type 4X/12. Rear IP20
Relative operating humidity	5 % – 85 % non-condensed
Storage temperature	-20 °C to +70 °C
Vibration and shock	1 G / 15 G
CE-marking	CE, FCC, KCC
UL	UL 61010-2-201
Marine	DNV, KR, GL, LR, ABS, CCS
Hazardous	No
RoHS compliance	DIRECTIVE/2011/65/EU
WEEE compliance	DIRECTIVE/2012/19/EU

## Dimensions

Weight	1.65 kg
Dimension W×H×D (mm)	292 x 194 x 52 mm
Cut-out dimension W×H (mm)	275 x 177 mm
Mounting depth mm. (Including clearance)	45 (145)
Mounting	Panel Mount, VESA 75 x 75

---

[solutions.abb.com/symphonyplus](https://solutions.abb.com/symphonyplus)  
[solutions.abb.com/controlsystems](https://solutions.abb.com/controlsystems)

---

800xA and Symphony Plus is a registered trademark of ABB. All rights to other trademarks reside with their respective owners.

We reserve the right to make technical changes to the products or modify the contents of this document without prior notice. With regard to purchase orders, the agreed particulars shall prevail. ABB does not assume any responsibility for any errors or incomplete information in this document.

We reserve all rights to this document and the items and images it contains. The reproduction, disclosure to third parties or the use of the content of this document – including parts thereof – are prohibited without ABB's prior written permission.

Copyright© 2025 ABB All rights reserved