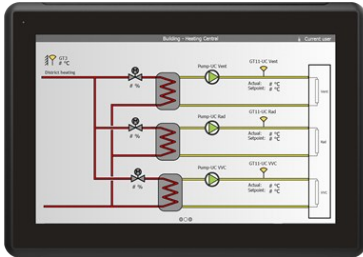


PP875H

ABB Ability™ Symphony® Plus Hardware Selector



Touchscreen panels with brilliant TFT/LED display colors and multi-protocol connectivity. The black range of Panel 800 comprises of PP875M, PP875H and PP886M that are easy-to use HMI with comprehensive and integrated templates and libraries for every conceivable process you need. All black panels are equipped with high-resolution graphics in TFT/LED display. Most models offer wide screen, high resolution display for increased efficiency and excellent operator interaction.

Features and benefits

- Easy to use**
 A fully deployable HMI with comprehensive and integrated templates and libraries for every conceivable process. The Panel Builder tool, with familiar Microsoft® Windows® environment along with multiple language support results in quick, easy and efficient engineering.
- State-of-the-arts graphics**
 Vector-based, high-resolution graphics in TFL/LED display, with icon-based interface, navigation and control.
- Robust and reliable**
 Panel 800 is constructed in a strong yet lightweight diecast, powder-coated aluminum housing. Front casing withstands wet, dusty and demanding environments. Operating temperatures ranging between -10° C to + 60° C with maximum 85% humidity.
- Truly open platform**
 Built on open architecture and technologies that accompany the .NET framework, these panels are capable of multi-brand controller connectivity. A multitude of connection options are available for local communication, expansion, remote access and more.
- Digital output**
 2 x DO Solid state relay, 0.5A@24VDC.

General info	
Article number	3BSE092983R1
Category	Black
Display type	Touch
Display size	7"
Brightness	1000 cd/m ²
Display resolution, ratio	800 x 480 pixels
Processor	ARM9 (1 GHz)
Main memory	2 GB
External storage media	1 × SD card slot (or SDHC with latest image loaded)
Dimension WxHxD (mm)	204 x 143 x 50 mm
Power supply	24 V DC (18 to 32 VDC)
Operating temperature	-10 °C to +60 °C

Detailed data

Dimming	Marine optimized dimming down to 0.5 cd/m ²
Interaction type	Resistive touch
Realtime clock	Yes
Ethernet (shielded RJ 45)	2 x 1x10/100 Base-T
USB	1 x USB Host 2.0, 500mA
Serial port	1 x RS232, 1 x RS422/485, 1 x RS485 (only if COM 2 is RS485)

Environment and certification

Frame material, front foil	Black powder-coated aluminum
Power consumption	21.6 W
Protection (front/rear)	Front IP65, NEMA 4X/12 and UL Type 4X/12. Rear IP20
Relative operating humidity	5 % – 85 % non-condensed
Storage temperature	-20 °C to +70 °C
Vibration and shock	1 G / 15 G
CE-marking	CE, FCC, KCC
UL	UL 61010-2-201
Marine	DNV, KR, GL, LR, ABS, CCS
RoHS compliance	DIRECTIVE/2011/65/EU
WEEE compliance	DIRECTIVE/2012/19/EU

Dimensions

Weight	0.8 kg
Dimension W×H×D (mm)	204 x 143 x 50 mm
Cut-out dimension W×H (mm)	189 x 128 mm
Mounting depth mm. (Including clearance)	43 (143) mm
Mounting	Panel Mount, VESA 75 x 75

—
solutions.abb.com/symphonyplus
solutions.abb.com/controlsystems

—
800xA and Symphony Plus is a registered trademark of ABB. All rights to other trademarks reside with their respective owners.

We reserve the right to make technical changes to the products or modify the contents of this document without prior notice. With regard to purchase orders, the agreed particulars shall prevail. ABB does not assume any responsibility for any errors or incomplete information in this document.

We reserve all rights to this document and the items and images it contains. The reproduction, disclosure to third parties or the use of the content of this document – including parts thereof – are prohibited without ABB's prior written permission.

Copyright© 2024 ABB All rights reserved